

TAURUS GLEIT-H-11

Instructions for installation and use



DE – ACHTUNG: Die Verwendung des Innotech-Produktes ist erst zulässig nachdem die Gebrauchsanleitung in der jeweiligen Landessprache gelesen wurde.

DE

EN – ATTENTION: Use of the Innotech product is only permitted after the instruction manual has been read in the respective national language.

EN

IT – ATTENZIONE: L'utilizzo del prodotto Innotech è permesso solo previa lettura del manuale di istruzioni nella lingua del paese corrispondente.

IT

FR – ATTENTION : L'utilisation du produit Innotech n'est autorisée qu'après la lecture du mode d'emploi correspondant dans la langue du pays.

FR

NL – ATTENTIE: Het gebruik van dit Innotech product is pas toegestaan, nadat de gebruikshandleiding in de taal van het betreffende land gelezen werd.

NL

SV – O B S : Denna Innotech-produkt får inte användas, förrän bruksanvisningen på respektive lands språk har lästs igenom.

SV

DK – BEMÆRK: Produktet fra Innotech må først anvendes efter at brugsanvisningen på det pågældende lands sprog er læst igennem.

DK

ES – ATENCIÓN: El uso del producto Innotech sólo está permitido después de que se hayan leído las instrucciones de uso en el idioma del respectivo país.

ES

PT – ATENÇÃO: O uso do produto Innotech apenas é permitido depois de ter lido as instruções de uso na respectiva língua nacional.

PT

PL – UWAGA: korzystanie z produktu Innotech jest jedynie dozwolone po przeczytaniu podręcznika w języku narodowym.

PL

RO – ATENȚIE: Utilizarea produsului Innotech este autorizată abia după ce au fost citite instrucțiunile originale de utilizare în limba țării respective.

RO

SL – POZOR: Uporaba izdelka Innotech je dovoljena šele po tem, ko navodila preberete v svojem jeziku.

SL

CZ – POZOR: Práce s výrobkem Innotech je povolena až po prostudování návodu k použití v příslušném jazyce daného státu.

CZ

SK – POZOR: Používanie výrobku Innotech je povolené až potom, keď ste si prečítali návod na obsluhu v jazyku príslušnej krajiny.

SK

HU – FIGYELEM: Az Innotech termékek használatá csak az után engedélyezett, miután saját nyelvén elolvasta a használati utasítást.

HU

ZH – 注意: 只有在阅读了当地语言的使用说明后, 才能使用 Innotech 公司的产品。

ZH

Prior to use, the following safety instructions and the current state of the art must be taken into consideration.

- INNOTECH "TAURUS GLEIT-H-11" may be used only in combination with the INNOTECH "TAURUS" rail system.
- Completely read this instruction manual.
- Read the instructions for installation and usage for the INNOTECH "TAURUS" rail system fully. (Comply with the safety instructions!)
- These instructions for installation and usage must be stored by the building owner and made available to the user.
- Understand and accept the possibilities and restrictions of the arrest system and the protective equipment used, as well as the risks associated with its use.
- If uncertainties arise during installation/use, it is imperative that you contact the manufacturer. (www.innotech.at)
- If the equipment is sold in another country, the instructions for installation and use must be provided in the respective national language!
- For horizontal use, only those fasteners may be used that are suited for this purpose and have been tested for the respective edges (sharp edges, trapezoidal corrugated sheeting, steel girders, concrete, etc.).
- Fall arrest devices may be used only if approved for horizontal rail systems by the manufacturers of these fall arrest devices.

If there are any doubts concerning the reliable operation of the shuttle, it must no longer be used until it has been checked by an expert (written documentation). If necessary, the product must be replaced immediately.

2.1. TO BE CHECKED BEFORE EACH USE:

- Easy movement of the running rollers
- Anchorage eye can be turned easily
- No deformation (e.g. dislocation of the running rollers, ...)
- No corrosion
- Indications of wear or bearing damage
- No damage

2.2 ANNUAL INSPECTION:

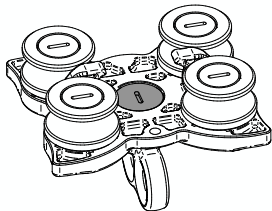
The "TAURUS GLEIT-H-11" must be subjected to inspection at least annually to inspection by an expert who is familiar with the arrest system, because the user's safety depends on the effectiveness and durability of the equipment. Depending on the intensity of use and the environment, it may be necessary to shorten the inspection intervals. The inspection must be documented in the "TAURUS" instructions for installation and usage by the expert, and must be stored along with these instructions for use.

INSPECTION POINTS:

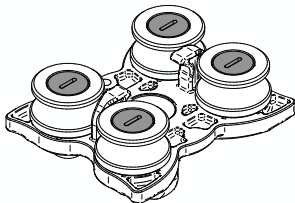
as section 2.1

- Glued-in screwed connection secured
(1 x anchorage eye + 4 x running roller axle)

1 x anchorage eye



4 x running roller axle

**2.3 ATTENTION! STOP USING THE EQUIPMENT IF:**

- Damage or wear to its components is obvious
- Stress has occurred due to falling
- Damage is determined through regular inspections
- The product identification is no longer legible

3

CARE / STORAGE

INNOTECH "TAURUS GLEIT-H-11" is maintenance-free.

It is recommended to keep the shuttle together with the PPE.

During transport, protect against UV radiation, chemicals, moisture, and other environmental effects.

IF NECESSARY:

Clean harness rail slider with a soft and lukewarm water, rinse off with clean water and air dry.

4

WARRANTY

Under normal conditions of use, there is a two year warranty on all components against manufacturing defects. However, if the shuttle is used in particularly corrosive atmospheres, this period may be shortened.

If there is strain (from a fall) the warranty claim is void for those components that have been designed to absorb energy, or that may possibly deform and must therefore be replaced. Attention: INNOTECH does not assume any warranty in case of improper installation.



5

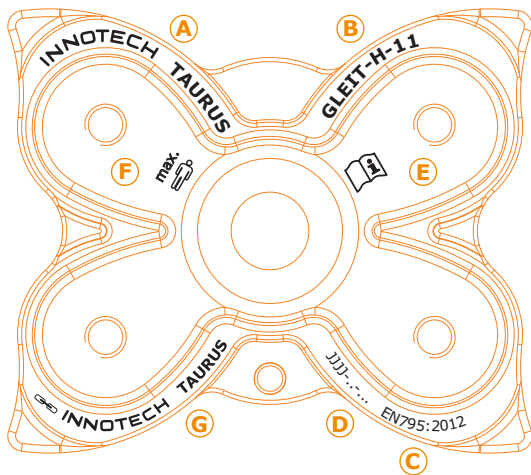
STANDARDS

INNOTECH "TAURUS GLEIT-H-11" was tested and certified as a horizontal shuttle (moving anchorage point) of the INNOTECH "TAURUS" rail system tested in accordance with **EN 795:2012 type D**

THE NOTIFIED AUTHORITY PARTICIPATING IN THE TYPE TEST:

DEKRA Testing and Certification GmbH, Dinnendahlstr. 9, 44809 Bochum, Germany ☎ 0158

- | | |
|--|---|
| A) Name or logo of the manufacturer / reseller: | INNOTECH |
| B) Type designation: | TAURUS GLEIT-H-11 |
| C) Number of the applicable standard: | EN 795:2012 Type D |
| D) Year of manufacture and manufacturer's serial number: | 20XX/XXXX |
| E) Sign stating that the instructions for use must be complied with: |  |
| F) Maximum number of people who can be secured: | 1 |
| G)  INNOTECH TAURUS: | Use only together with the INNOTECH rail system: "TAURUS" |

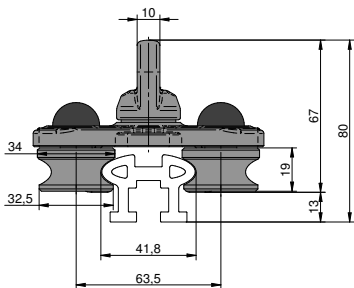
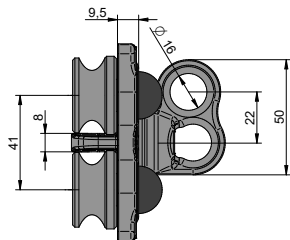
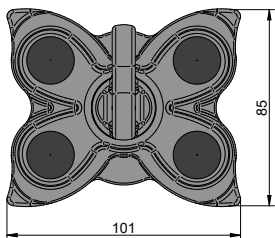


7

MATERIAL / DIMENSIONS

"TAURUS GLEIT-H-11": stainless steel V2A/V4A

"Cover cap": polyethylene



8

APPLICATION

The "TAURUS GLEIT-H-11" horizontal shuttle is characterised by resistance-free travel along the entire "TAURUS" horizontal rail system (straight sections and curves)

This was developed to ensure complete freedom of movement for the user without having to detach and put on the restraint system.

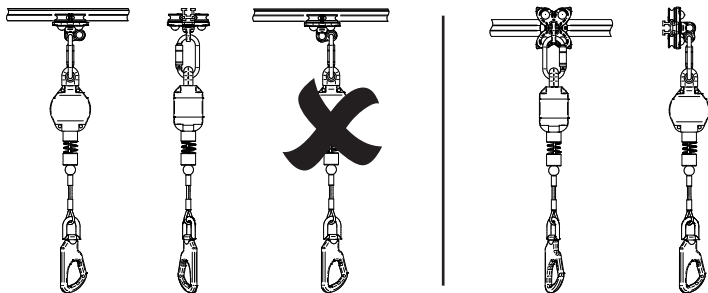
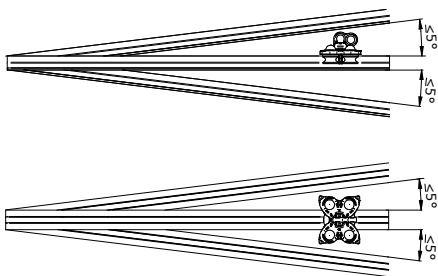
The rotatability of the shuttle's anchorage eye means that the rail system can be used from both sides.

Swinging during rope-supported work is not permitted as this may damage the safety system.

Approved as a moving anchorage point (SHUTTLE) for **1 person** on the horizontal INNOTECH "TAURUS" rail system

(tested in accordance with EN 795:2012 Type D).

The approved pitch of the INNOTECH "TAURUS RAIL" guide rail of the INNOTECH "TAURUS" rail system must not exceed an angle of 5° from the horizontal in both directions!



Suitable for the following fall protection systems in accordance with EN 363:2008

- Restraint systems
- Workplace positioning systems
- Fall arrest systems
- Rescue systems
- Abseiling work (rope access systems (EN 363:2008))

Safe application requires that you observe the corresponding specifications provided by the PPE manufacturers.

For safety reasons, we recommend that you always use fall arrest systems as restraint systems!

Fixing the shuttle in place during abseiling work requires the use of the positioning screw that is available from Innotech Arbeitsschutz GmbH.

The user must be capable of selecting and properly handling the "Personal Protective Equipment (PPE) against falls from a height" in due consideration of EN 363:2008!

The appropriate "personal protective equipment (PPE) against falls from a height" is connected to the anchorage eye of the "TAURUS GLEIT-H-11" as per the instructions of the manufacturer of the PPE (see instructions for use of the PPE) (e.g: EN 353-2 or EN 354 + EN 355, etc.)

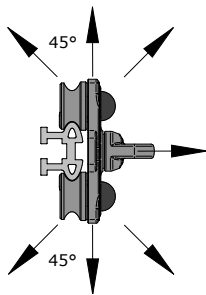
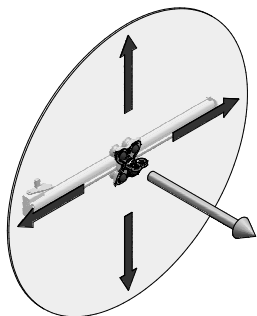
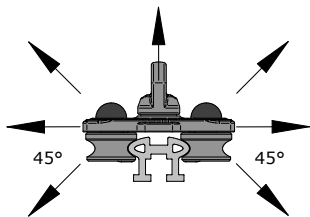
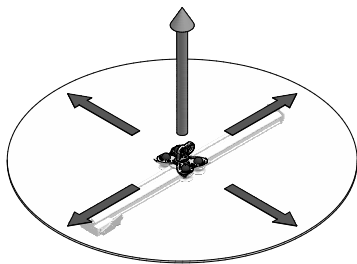
Every person working in areas where there is a danger of falling is personally responsible for paying attention to the fall height. The connection to the anchorage device must be kept as short as possible in order to limit free fall.

The minimum free space required between the roof edge and the ground is calculated as follows:

Free-fall height¹ (height of the unchecked fall until the PPE stops the fall)

- + Max. deflection of rail after a fall (max. 0.30 m)
- + Manufacturer's instructions for the PPE used to prevent falls from a height (e.g.: max. braking distance of the fall arrest device as specified by the manufacturer, etc.)
- + Shift of the fall-arrest eyelet attached to the safety harness in accordance with EN 361 (approx. 1.00 m)

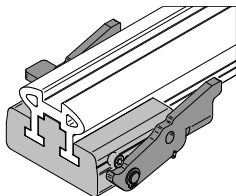
¹ ... can be avoided if positioned and used in the proper manner!



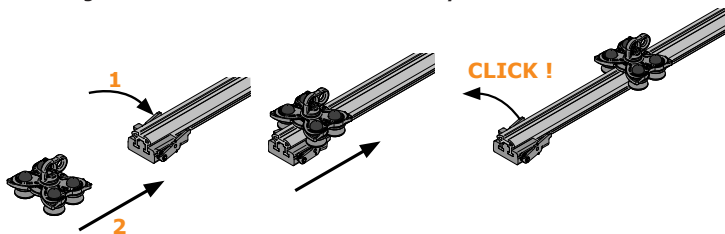
13 TAURUS GLEIT-H-11 FIXING AND REMOVING

The shuttle is part of your "TAURUS" horizontal rail arrest system. It can be attached or removed only at the "TAURUS EA-11" exit/entry. However, it must be remembered that the restraint of the person ends when he is detached from the system, and if a continuing risk of falling exists, another suitable measure of restraint must be present.

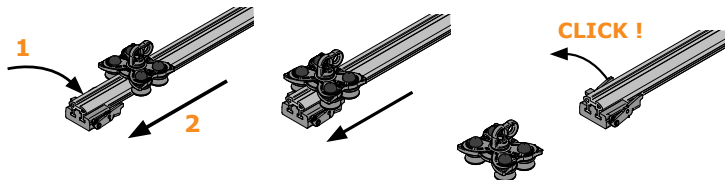
Entry / exit EA-11



Attaching the "TAURUS GLEIT-H-11" to the rail system



Detaching the "TAURUS GLEIT-H-11" from the rail system



INNOTECH Arbeitsschutz GmbH, Laizing 10, 4656 Kirchham/Austria.
www.innotech.at

