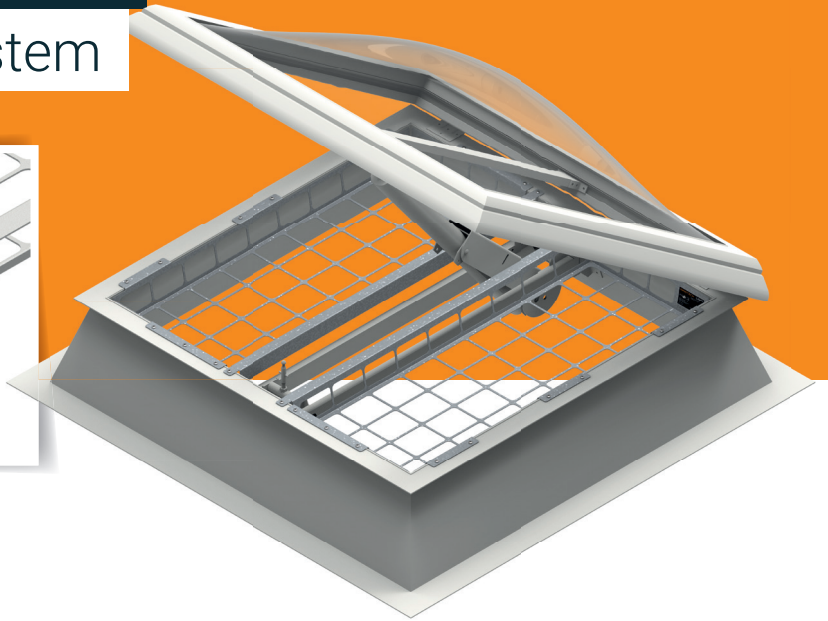


## FALL-THROUGH PROTECTION

# LIGHT

## Skylight protection system



The sky LIGHT collective fall protection system from INNOTECH can be implemented in any desired dimensions, and is a robust solution for very varied types of skylights and strip lights.

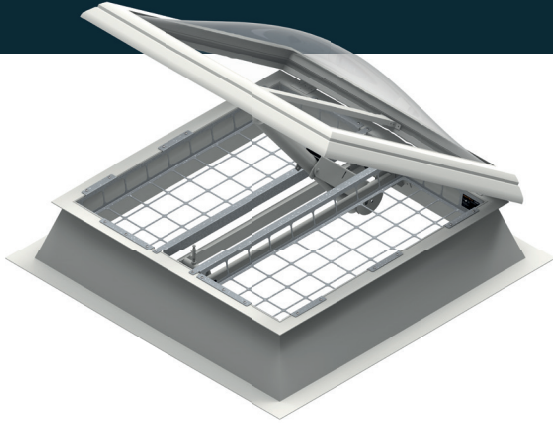
- Fall-through protection for open and enclosed skylights
- High visual quality for office and sales areas (RAL if required)
- High permeability to light and smoke
- Simple to install or retrofit
- Individual solutions possible for various types of skylights

Installation is quick and straightforward, and is possible on wood, concrete, steel, and plastic.

- Variable section sizes for opening mechanism
- Dynamically tested using 100 kg from a fall height of 1.2 m
- Certification to the latest state of the art:

GS-BAU-18 version of February 2001  
EN 1873:2016  
EN 14963:2006

## LIGHT



### LIGHT | SKYLIGHT PROTECTION SYSTEM

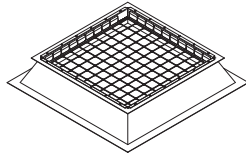
#### LIGHT

#### SKYLIGHT PROTECTION SYSTEM

Material: galvanised steel  
Mesh width: max. 100 x 100 mm

High light and smoke permeability,  
straightforward installation,  
and easy retrofitting

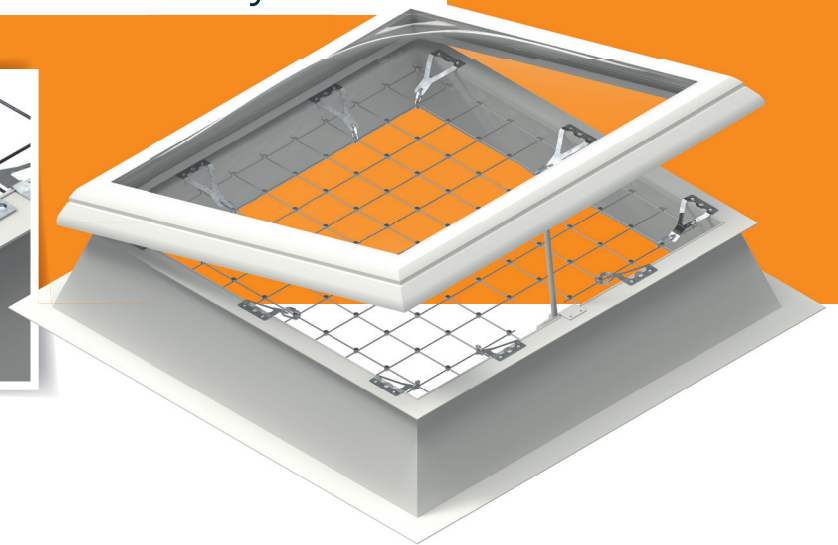
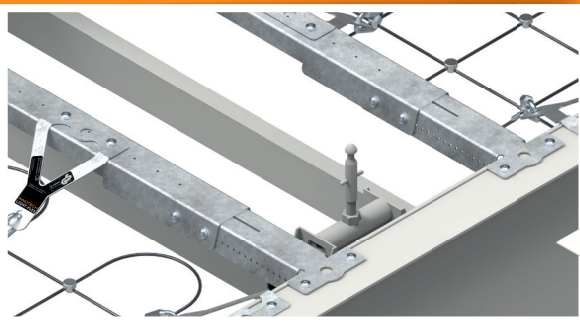
Various RAL colours, other mesh widths and special shapes  
(e.g. round) available on request



SIMPLE TO INSTALL

# LIGHT-FLEX

Skylight fall-through protection system



The flexible LIGHT-FLEX collective fall protection system from INNOTECH can be implemented in any desired dimensions, and is a robust solution for very varied types of skylights and strip lights.

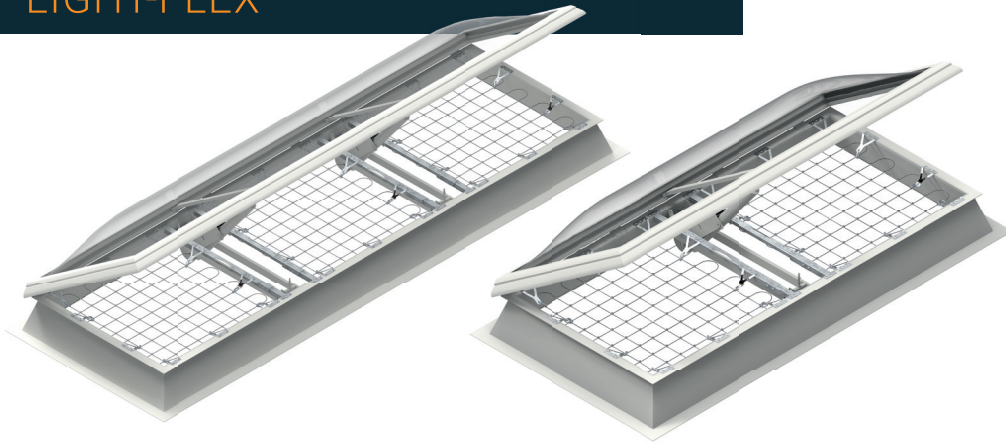
- Flexible fall-through protection for open and enclosed skylights
- Especially also for the protection of strip lights
- Simple to install or retrofit
- Variable size adjustment even during the installation
- Variable section sizes for opening mechanism

The system is a winner because installation is quick and straightforward, and is possible on wood, concrete, steel, and plastic.

- Also for smoke/heat extraction systems
- Express delivery available upon request
- High permeability to light and smoke
- Certification to the latest state of the art:

GS-BAU-18  
EN 1873:2016  
EN 14963:2006

**LIGHT-FLEX**



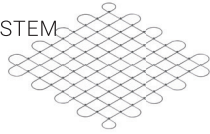
**LIGHT | SKYLIGHT PROTECTION SYSTEM**

**SKYLIGHT PROTECTION SYSTEM**

**LIGHT-FLEX-NET-01**

SKYLIGHT FALL-THROUGH PROTECTION SYSTEM

Material: galvanised steel  
Mesh width: max. 100 x 100 mm

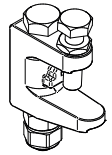


High light and smoke permeability - straightforward installation and easy retrofitting

**LIGHT-FLEX-BEF-40**

BEAM CLAMP FOR LIGHT-FLEX-BEF-01

Material: galvanised steel  
Flange thickness: 5 to 26 mm

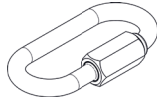


HILTI MAB-13 beam clamp for LIGHT-FLEX-BEF-01  
Available only upon request

**LIGHT-FLEX-KARI**

SCREW CARABINER FOR LIGHT-FLEX-BEF-01

Material: galvanised steel  
Load capacity: 125 kg



**LIGHT-FLEX-RWA-01**

STIFFENING RAIL FOR LIGHT-FLEX-BEF-0

Material: galvanised steel  
Adjustment ranges:  
1165 mm: 800 to 1165 mm  
1525 mm: 1150 to 1525 mm  
1900 mm: 1525 to 1900 mm



Stiffening rail for LIGHT-FLEX-NET-01 for skylights with smoke and heat extraction system

*VARIABLE SIZE ADJUSTMENT  
EVEN DURING THE INSTALLATION  
HIGH PERMEABILITY TO LIGHT  
AND SMOKE  
ESPECIALLY FOR  
THE PROTECTION OF ROOF*

**LIGHT-FLEX-BEF-01**

FASTENING HOLDER FOR LIGHT-FLEX

Material: galvanised steel  
Length: 130 mm  
Width: 90 mm



LIGHT-FLEX / skylight fall-through protection

**LIGHT-FLEX-BEF-02**

FASTENING HOLDER FOR LIGHT-FLEX, PRE-CANTED

Material: galvanised steel  
Length: 136 mm  
Width: 90 mm

