



DE – ACHTUNG: Die original Gebrauchsanleitung des jeweiligen INNOTECH Produkts beachten.

DE

EN – ATTENTION: Please follow the instructions in the INNOTECH product's original user manual.

EN

IT – ATTENZIONE: rispettare il manuale di istruzioni originale del relativo prodotto INNOTECH.

IT

FR – ATTENTION : respecter la notice d'utilisation d'origine du produit INNOTECH concerné.

FR

NL – ATTENTIE: de originele gebruikershandleiding van het betreffende INNOTECH-product dient in acht te worden genomen.

NL

SV – O B S : Se originalbruksanvisning för respektive produkt från INNOTECH.

SV

DK – GIV AGT: Følg brugsvejledningen til det pågældende INNOTECH-produkt.

DK

ES – ATENCIÓN: Siga las instrucciones de uso correspondientes al producto INNOTECH.

ES

PT – ATENÇÃO: Respeitar as instruções de uso originais do produto INNOTECH correspondente.

PT

PL – UWAGA: Przestrzegać zaleceń podanych w oryginalnej instrukcji obsługi produktu INNOTECH.

PL

TR – DİKKAT: İlgili INNOTECH ürününün orijinal kullanım kılavuzunu dikkate alın.

TR

SL – POZOR: Upošteвайте izvirna navodila za uporabo ustreznega INNOTECH-izdelka.

SL

CZ – POZOR: Respektujte originální návod k použití daného výrobku INNOTECH.

CZ

SK – POZOR: Dodržiavajte originálny návod na používanie príslušného produktu INNOTECH

SK

HU – FIGYELEM: Az adott INNOTECH termék eredeti használati utasítását be kell tartani.

HU

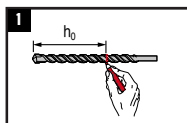
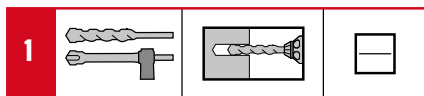
ZH – 中文 – 注意 : 请遵循 INNOTECH 产品原始用户指南中的说明。

ZH

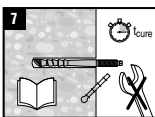
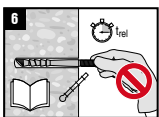
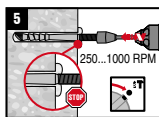
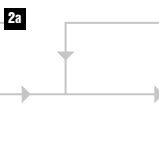
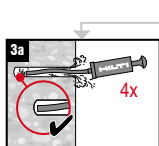
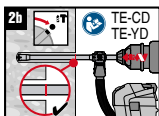
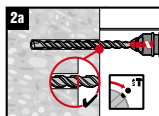
INNOTECH BEF-110



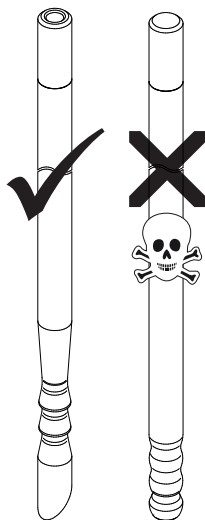
HILTI HVU-TZ M16



	$\varnothing d_0$	h_0	$\varnothing d_{f1}$
M10	12 mm	90 mm	12 mm
M12	14 mm	110 mm	14 mm
M16	18 mm	125 mm	18 mm
M16L	18 mm	145 mm	18 mm
M20	25 mm	195 mm	22 mm



POINT-13



[°C]	[°F]	t_{rel}	t_{cure}
-5...-1	23...31	60 min	5 h
0...9	32...49	30 min	60 min
10...19	50...67	20 min	30 min
20...40	68...104	8 min	20 min